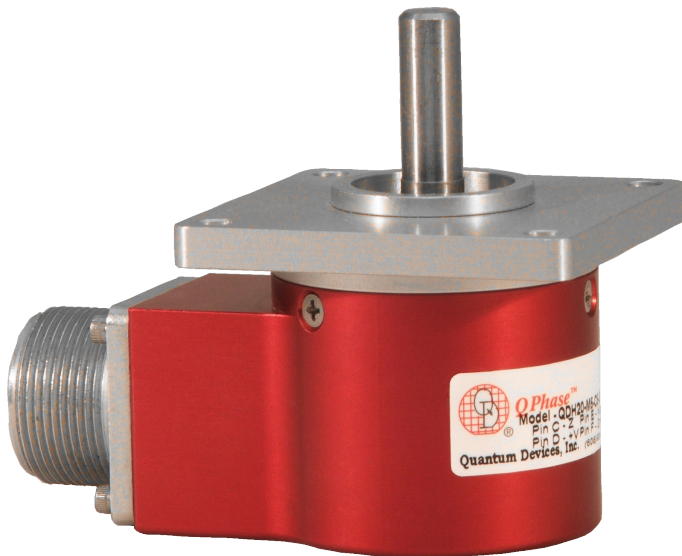


Quantum Devices, Inc.

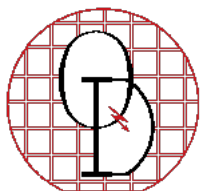
Encoder Innovations

*QPhase*TM



Encoders

Quantum Devices, Inc. - P.O. Box 100 - 112 Orbison Street - Barneveld, WI 53507
(608) 924-3000 - fax: (608) 924-3007 - www.quantumdev.com



Product Offering:



| Series | QD787 | QD110 | QD12 |
|--------------------|--|--|--|
| CPR/Resolution* | 500, 512, 1000, 1024, 2000, 2048, Absolute (8 Bit) | 500, 512, 1000, 1024, 2000, 2048, Absolute (8 Bit) | 24, 256, 360, 500, 512, 1000, 1024, 1250, 2000, 2048, 2500, 4000, 4096, 5000, 8192, 10000, 16384, 20000, Sine/Cosine |
| Frequency Response | 200kHz (50Khz on absolute) | 200kHz (50Khz on absolute) | 500kHz |
| Commutation | No | No | 4, 6, 8 Poles |
| Supply Voltage | 5-26 VDC | 5-26 VDC | 5 VDC |
| Output | TTL, RS-422A, Gray or Binary Code | TTL, RS-422A, Gray or Binary Code | TTL, RS-422A, Open Collector, Sin/Cosine |
| Bore Size | Solid: 1/8" Hollow: 2mm, 2.5mm, 1/8" | Solid: 1/8" Hollow: 2mm, 2.5mm, 1/8" | Hollow: 5mm, 6mm, 8mm, 10mm, 1/4", 5/16", 3/8" |
| Mounting Options | Face Mount | Face Mount | SS Flex: 1.812", 1.575", 1.280" HEDS Resolver Mount/Jam Nut |
| Max RPM | 8000 | 8000 | 8000 |
| Temperature Rating | 0-70° C Optional: -20-100° C | 0-70° C Optional: -20-100° C | -20-115° C |
| IP Rating | 50 | 50 | 40/52 |
| RoHS | Yes Absolute: No | Yes Absolute: No | Yes |

* Consult factory for custom line counts

Features:

- Line Counts up to 20,000 (80,000 Post Quad)
- Custom Configurations and Cable Lengths
- Integral Bearing Assembly Standard on all Series
- Two Year Warranty

Application Data Worksheet

Contact Information:

Mr / Ms _____ Company Name _____
 First Last

Address _____

City _____ State _____ Zip _____

Phone _____ Fax _____ Email _____

Encoder Information:

Resolution/Line Count: _____

Commutation: Yes or No

Number of Poles: _____

Shaft Style: Hollow or Solid

Shaft Diameter: _____ inch or mm

Mounting Style: _____

Bolt Circle Diameter: _____

Voltage: _____

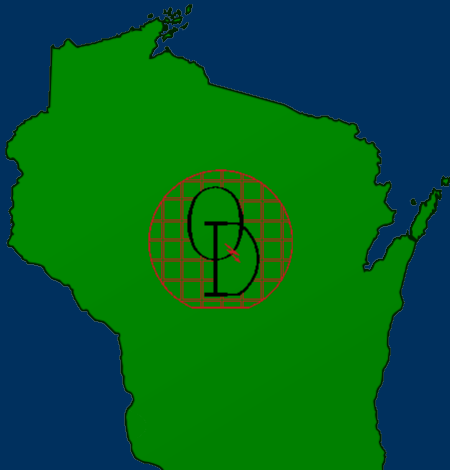
RPM: _____

Operating Temperature Range: _____ Max Temperature: _____

If existing application, Current Brand and Model Number: _____

General Description of Application:

For selection assistance from our application engineers please copy and fax to (608)924-3007



Quantum Devices, Inc.

P.O. Box 100
112 Orbison Street
Barneveld, WI 53507

Tele: (608) 924-3000
Fax: (608) 924-3007

For more information visit us at: www.quantumdev.com